

# FY 20/21 CSU Parking Expansion Plan

## Foothills Campus Draft Plan



**PARKING AND  
TRANSPORTATION SERVICES**  
COLORADO STATE UNIVERSITY

January 2020

# Agenda

## Overview

- Foothills Campus Map
- Communication

## Planning

- Permit Overview
- Permit Pricing
- Permit Options
- Permit Scenarios
- Parking Maintenance
- Parking Construction

## Developing

- Campus Accessibility
- Bike Trails
- Transit
- Signage
- Signage Map
- Enforcement

# Foothills Campus

1. The Factory
2. Atmospheric Simulation Lab
3. Engineering Buildings
4. Atmospheric Science
5. CIRA
6. Forestry
7. Fisheries
8. ERL
9. ARBL
10. BW Pickett Equine Center
11. CGMP
12. RIC
13. IDA
14. Aggie Labs
15. Connector Road

Surface area >650,000 sq ft

Roughly 1,500 parking spaces

CSU permit is required in all areas on Foothills Campus, designated and undesignated.



# Communication

CSU A-Z: a b c d e f g h i j k l m n o p q r s t u v w x y z

Students - Employee - Visitors - Transportation Options - Fleet Services - **Parking Services -**

Planning

Foothills Campus

Main Campus

[Aggie Labs Meeting 3.06.19](#)

Parking and  
Transportation  
Services Webpage

## Overview

Foothills campus email distribution list created

New planning page on PTS website under Parking Services

Consultant led listening sessions fall 2018

Department meetings Spring 2019

Survey conducted Fall 2019

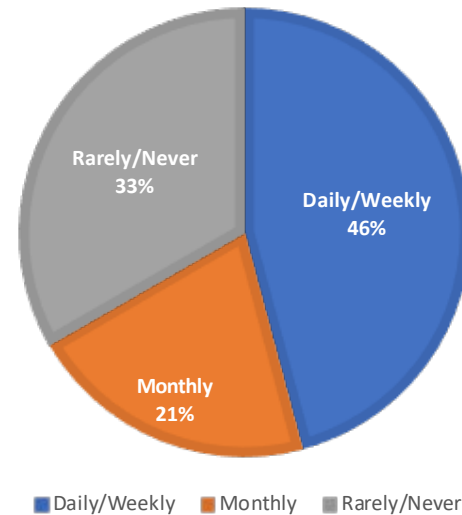


# Pricing Overview

## Key considerations:

- Travel between campuses
- Variable schedules
- Multiple modes of transportation
- Affordability
- Expenses
- Transferability between new and existing CSU permits
- Accessibility to main campus for connectivity (meetings), partnership

TRAVEL FREQUENCY MAIN & SOUTH CAMPUS



67% of Foothills Campus parking survey respondents indicated travel at least a few times each month between campuses



# Annual Permit Pricing & Location Eligibility

	Employees	Commuter Student	Residence Hall Student	CSU Apartment	Employees & Students	Employees & Students	Employees, Students & Visitors	State Vehicles
Permit Type	A, B, E	Z	Q, W, X, XR	I, S, T, U	ZR (Foothills Campus & Moby Lot)	R (Pickett Equine Center & Research Blvd)	Hourly	J
Annual Permit Cost	\$618	\$569	\$667	Price varies	\$424	\$266	Not Applicable	\$745
Main Campus	yes	yes	yes	not eligible	Moby parking lot only	not eligible	\$2.00/hour	yes
South Campus	yes	yes	yes	not eligible	yes	yes	\$2.00/hour	yes
Foothills Campus	yes	yes	yes	not eligible	yes	yes, Pickett Equine Center	\$1.50/hour	Foothills Campus J permit \$0, eligible on Foothills Campus only

Parking at Foothills Campus will be designated as mixed use – all parking areas are open to visitor, employee and students with valid CSU permit or hourly payment at Foothills Campus.

Survey respondents reported purchasing the following permit types:  
Annual, Semester, Monthly, Daily, T/Th or M/W/F and Hourly



# Foothills Campus Permit Options

Parking permit program effective Aug 2020

	Annual	Semester	Monthly	Daily	Summer	Hourly
Standard ZR permit	\$424	\$240	\$60	\$8	\$144	\$1.50/hr
Mon/Wed/Fri	\$254	\$144				
Tue/Thu	\$170	\$96				
Remote R permit (B.W. Pickett Equine Center)	\$266	\$148	\$37	\$6	\$89	\$1.50/hr
Mon/Wed/Fri	\$160	\$89				
Tue/Thu	\$106	\$59				

A variety of parking permits available for students and visitors

- **Motorcycle permit** (annual \$293, semester \$162) eligible on all three campuses. Motorcycle permit can be added to vehicle permit.
- **Storage permit** (\$20 - 14 calendar days) to support field research that requires short term vehicle storage in designated areas as approved by Parking and Transportation Services.
- **Visitor parking permits** are available for hourly and daily parking. Visitor day passes will be valid in all designated parking areas. Remote daily permits for the campus are also available. Visitors with a main campus visitor permit (A , Z or MB) can park in any permitted area on Foothills Campus or if they have a remote permit for Research Blvd (RB), they can park in remote parking on Foothills Campus. Placards continue to be available for visitor use. We will evaluate opportunities in future years to replace placards with a virtual permit.



# Foothills Campus Permit Scenarios

## Visitor

\$1.50 hourly parking at pay station or on mobile app

Daily Foothills Campus permit \$8

Departments can request virtual group conference permits

## Flexible schedule

Free parking

Before 7:30 a.m. and after 4 p.m.  
Monday - Friday and free all day Sat/Sun & University holidays

## Carpool hourly

3 students attending Tu/Th classes carpool and pay hourly for the semester sharing cost (\$34 each, assuming 4 hours each week on campus for 17 weeks)

## Carpool permit

3 students attending a semester class, arrange carpool to Foothills Campus and share Mon/Wed/Fri semester permit cost (\$48 each), taking only 1 of their vehicles to campus

## Shared Permit

2 PT hourly students share a semester permit cost (\$120 each), students divide their time on campus (split days of the week or hrs of day) so only 1 vehicle is on campus at any given time

Examples above are for employees, students, visitors that do not have Main or South Campus permit and wish to park at any location. The examples for carpool and shared permit assume permit duration is one semester.





# Parking Maintenance

Annual preventative maintenance for ~ 650,000 square feet at Foothills Campus

---

- Parking areas are built and maintained to CSU standards with intent to extend life
  - Inspections
  - Seal coat
  - Crack fill
  - Striping
  - Snow removal
    - Custodial Services clears building entrances up to 20' from the building
    - Facilities Management 491-0077
- Contact Information
  - Parking and Transportation Services 491-7041 (snow removal in parking areas starting fall/winter 2020)



# Parking Construction

Areas identified for reconstruction – includes evaluation of drainage and lighting

---

## Completed \$1.9 M – Reconstruction Projects

IDA

Engineering building parking areas (Daryl B. Simons, ABL and AWER)

## 1-3 Years – Reconstruction Plan

ARBL

CGMP

The Factory

ERL/Fisheries

## 3-5 Years – Reconstruction Plan

Aggie Labs

BW Equine Pickett Center

Fisheries expansion



# Campus Access and Circulation

## Connector Road

- \$1.25 M capital approved and paid for directly by the University to support connector road
- Road alignment study in progress
- Road supports circulation options on campus
- Parallel shared use bike and pedestrian facility

## Rampart Road

- Road condition assessment completed
- Parallel shared use bike and pedestrian facility
- Alignment with ERL operations



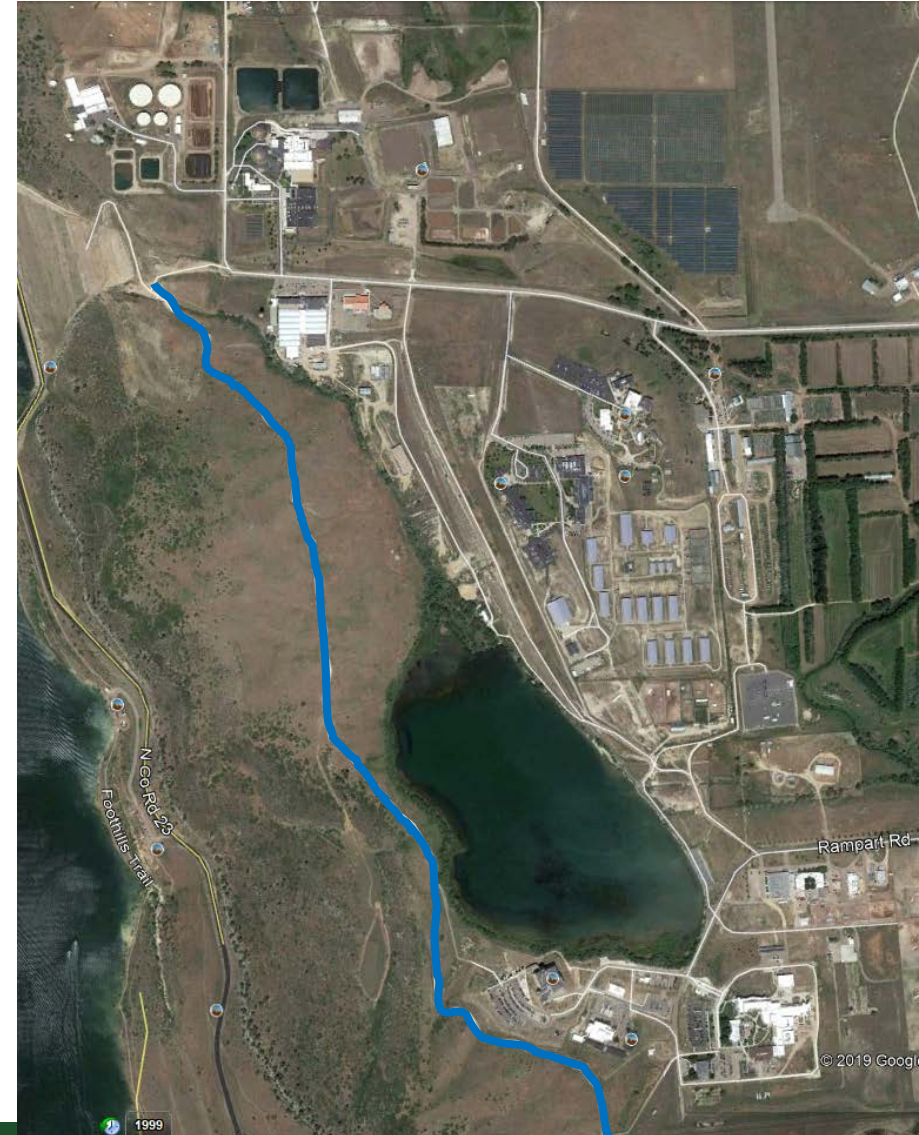
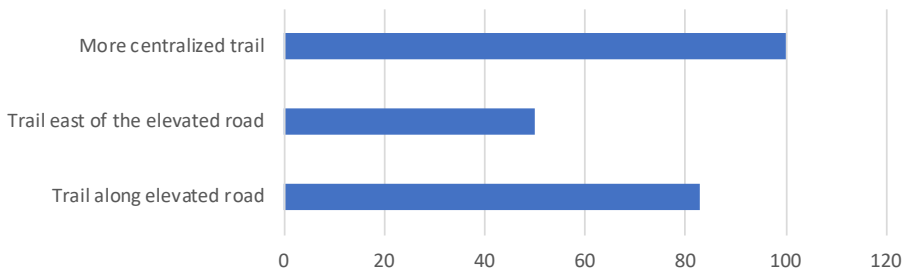


# Campus Access and Circulation

## Bike Trail

- Partnering with the city to evaluate Dixon Canal trail and access point
- Bike Racks

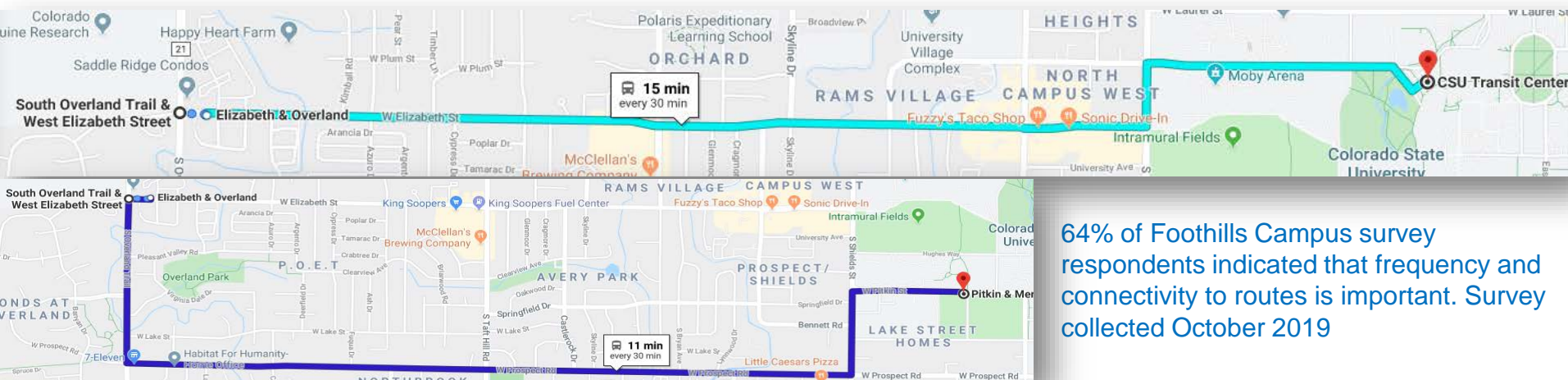
Suggested North/South Bike Trail on Foothills Campus





# Foothills Campus Shuttle

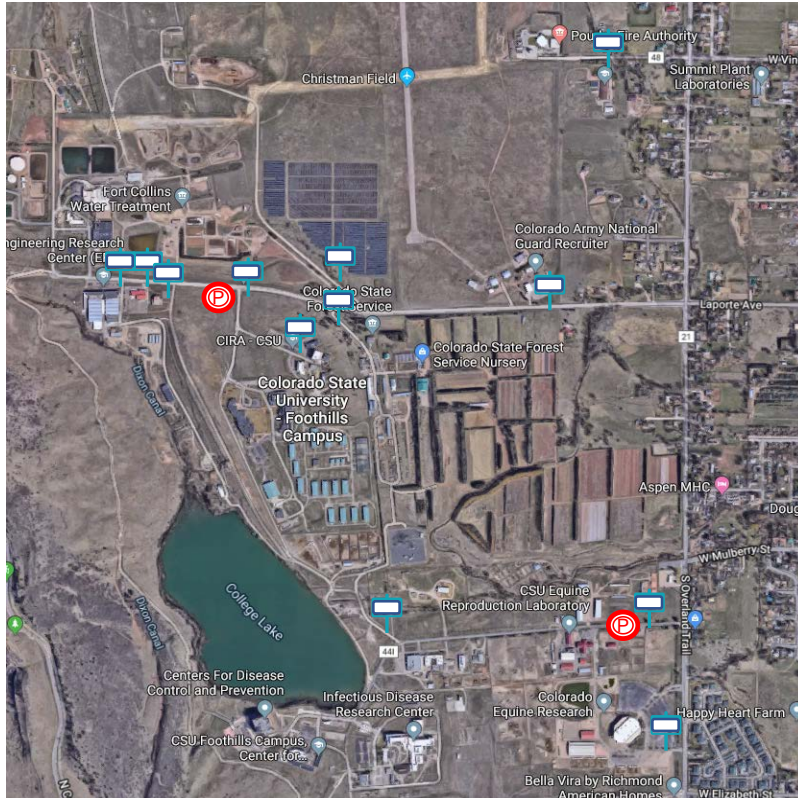
- 2 buses dedicated to Foothills Campus connecting with Elizabeth routes to improve circulation
  - Starting August 2020 – Mon. – Fri. (Annually)
  - ~20 min circulation frequency on Foothills Campus
  - ~ 6:45am – 6:45pm
  - Transfer at Elizabeth / Overland
    - Route 2 & 32
- Temple Grandin & Equine Center Transit Station
- \$1.5 Million Bus Rapid Transit Study



64% of Foothills Campus survey respondents indicated that frequency and connectivity to routes is important. Survey collected October 2019



# Signage Map



## Proposed Placement for Signage



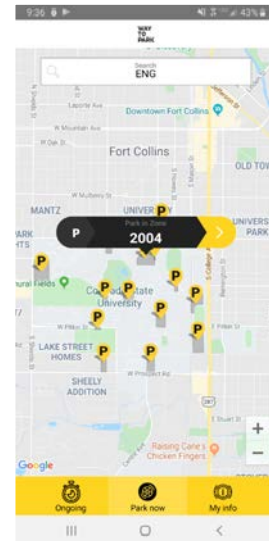
**CSU Permit Required (12)**  
— Notification that all areas on Foothills Campus require a valid CSU permit



**Pay Station Signage (2)**  
— Rampart Road, east side off S Overland Trail  
— Laporte Ave, near Atmospheric Science or Forestry



**Mobile payment app**  
— Offers a quick option to pay and extend time





# Enforcement

Traditional and innovative solutions under consideration for enforcement with efforts to support Foothills Campus

Enforcement hours will be consistent with Main and South Campus, 7:30 a.m. – 4 p.m., Monday-Friday.

- Enforcement includes fall, winter, spring and summer (except for official University holidays when campus is closed).
- Enforcement is managed through a virtual permit system that scans license plates. License plates are linked to a parking permit or hourly parking payment.
- All vehicles should be parked in designated parking areas. Vehicles parked in undesignated areas will still be required to have a valid CSU parking permit or pay for short-term parking online or at a pay station.
- Overnight storage authorized in designated locations only, with valid CSU permit and approval from Parking and Transportation Services.

In effort to support operations on Foothills Campus, reduce unnecessary traffic, support safety and provide quick online access to parking, PTS is evaluating opportunities to expand current LPR technology.



Thank you

---

